



# CFX 75

## 3/4" x 3/4" End Suction Centrifugal

The CFX 75 End Suction Centrifugal Pump is a premium choice for fluid transfer across a wide range of industries. Crafted with precision and constructed from durable 316 stainless steel, it offers outstanding reliability and long-lasting performance. From marine and agricultural settings to commercial and industrial operations, this pump delivers consistent results thanks to its robust design.

Ideal for applications requiring strong chemical resistance, the CFX 75 features 316 stainless steel components that provide excellent protection against corrosion, making it suitable for handling aggressive chemicals. Its standard carbon/ceramic/Viton bellows shaft seal ensures secure, leak-free operation for added dependability.

This versatile model supports multiple drive configurations, including close-coupled options for 115V AC, 230V AC, 12V DC and 24V DC power sources. Such flexibility allows seamless integration into diverse systems. Additionally, the pump is equipped with marine ignition-protected motors compliant with ISO 8846 standards, ensuring safe use in marine environments.

### SPECIFICATIONS:

<b>Suction / Discharge</b>	3/4" NPT x 3/4" NPT
<b>Materials of Construction</b>	316 stainless steel
<b>Flow</b>	Up to 28 GPM (6.35 m <sup>3</sup> /h)
<b>Head Feet</b>	Up to 32' (10 m)
<b>Impeller</b>	316 Stainless steel, Semi-Open (Sintered PM)
<b>Motor</b>	ISO 8846 motor available
<b>Drive Options</b>	Close coupled 115V AC Close coupled 230V AC Close coupled 12V DC Close coupled 24V DC
<b>Seal</b>	Standard carbon/ceramic/Viton Bellows 150 PSI (10 bar) Special seals upon request

### Application:

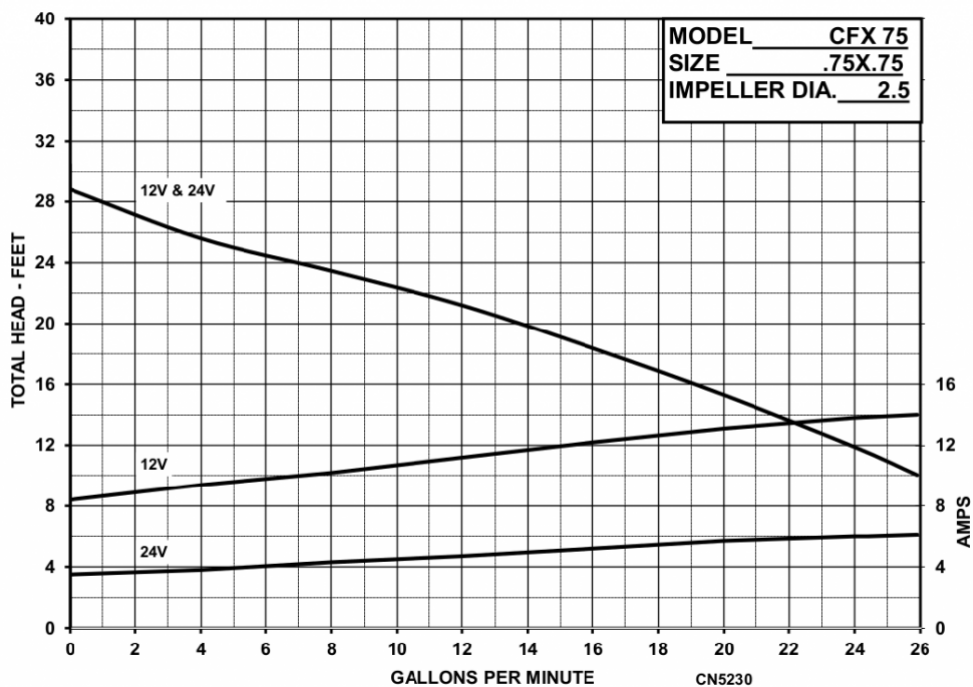
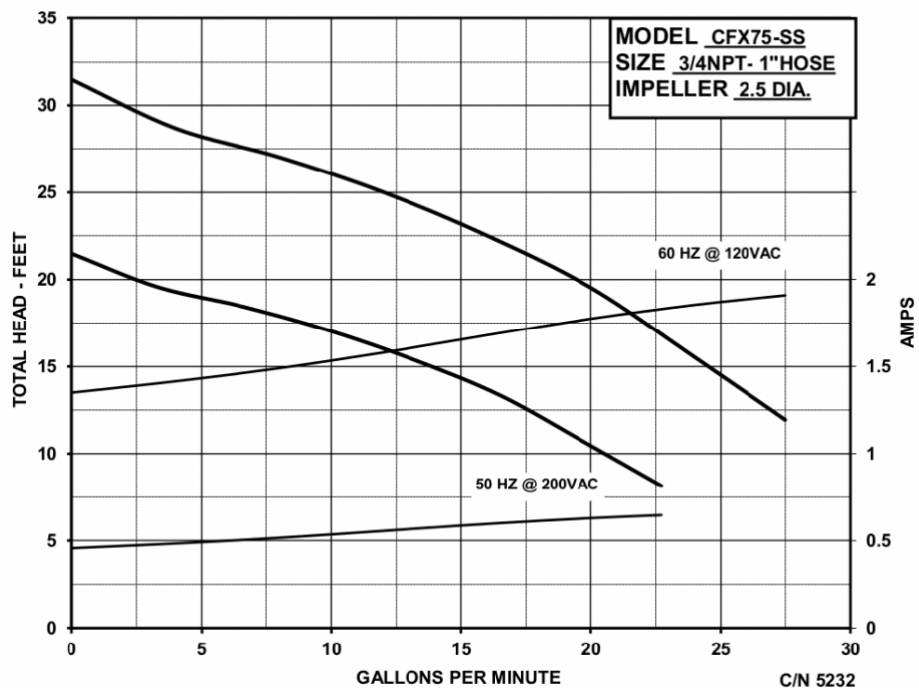
- Agricultural
- Commercial
- Industrial
- Marine
- OEM
- Transportation



An Ingersoll Rand Business

# CFX75

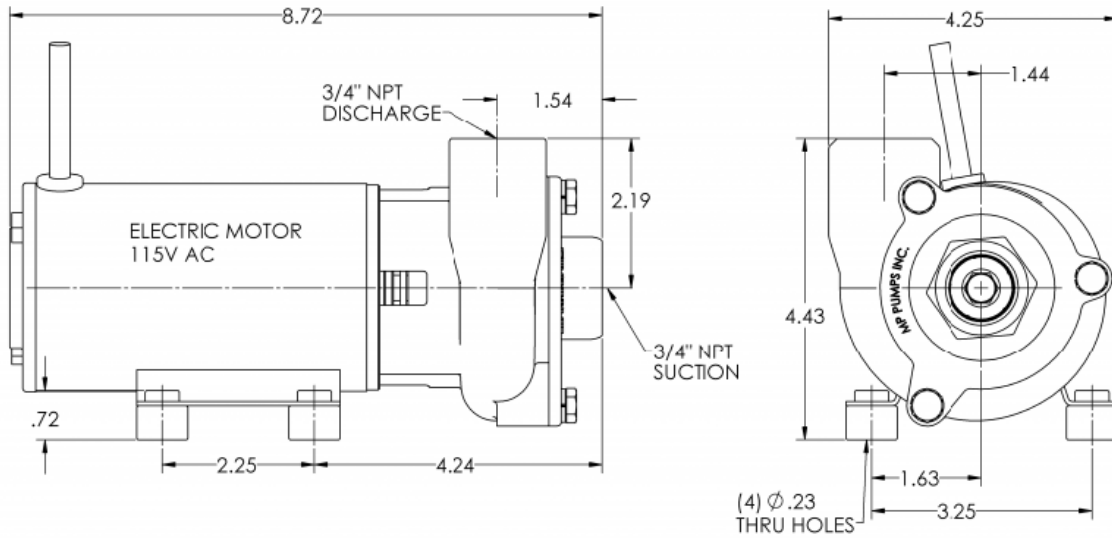
## PERFORMANCE CURVES



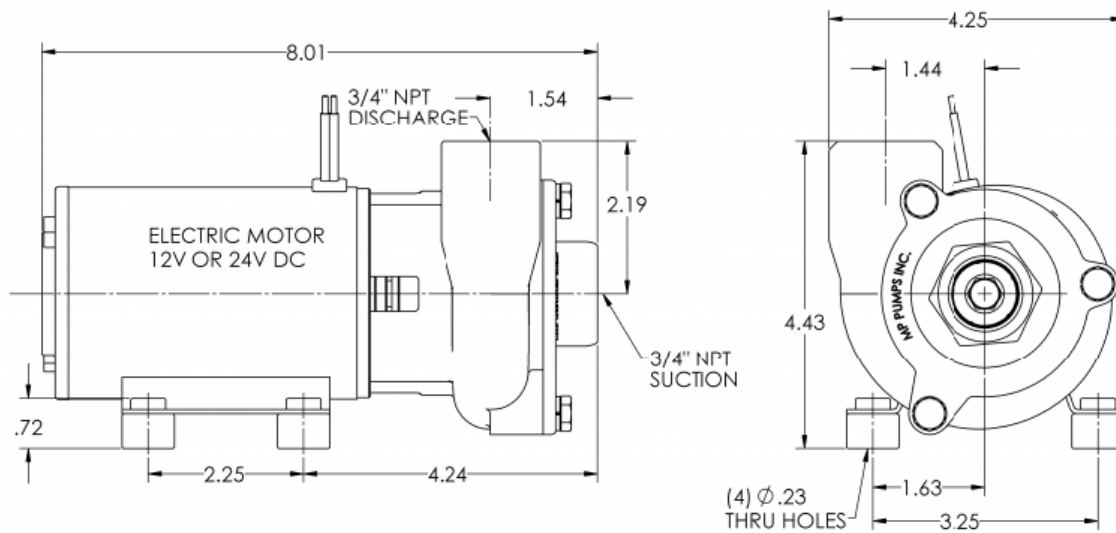
12500 South Pulaski Road  
Alsip, IL 60803, USA  
Phone (800) 563-8006

## DIMENSIONS

CFX75 with AC Motor



CFX75 with DC Motor



\* For complete parts lists and troubleshooting guidance, please refer to the MP Pumps Installation Operation & Maintenance (IOM) Manual.